



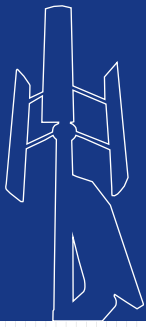
Aeolos-V

Vertical Wind Turbine Brochure



*Aeolos wind turbine
SINCE 1986*

Aeolos-V 10kW



Aeolos-V
windturbinestar.com

Aeolos wind turbine
SINCE 1986



Specification

Generator Type: Three Phase Permanent Magnet
 Rotor Height: 6.0m (19.68 ft)
 Rotor Width: 5.0m (16.4 ft)
 Turbine Weight: 680kg (1499.1 lbs)
 Blades Material: Aluminum Alloy
 Blade Quantity: 3 pcs
 Working Temperature: -20 °C to 50 °C
 Design Lifetime: 20 years

Performance

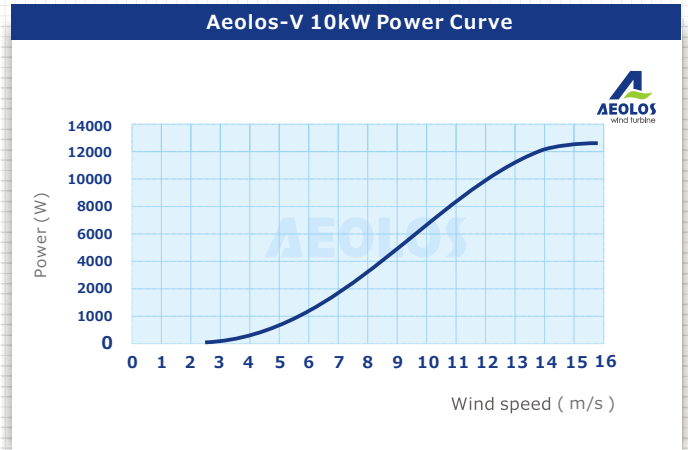
Rated Power: 10 kW
 Max Output Power: 12 kW
 Cut In Wind Speed: 2.5m/s (5.6 mph)
 Rated Wind Speed: 12m/s (26.8 mph)
 Survival Wind Speed: 55m/s (122.65 mph)
 Generator Efficiency: 96%
 Noise Level: <38 dB(A)
 Warranty: 5 year

Safety

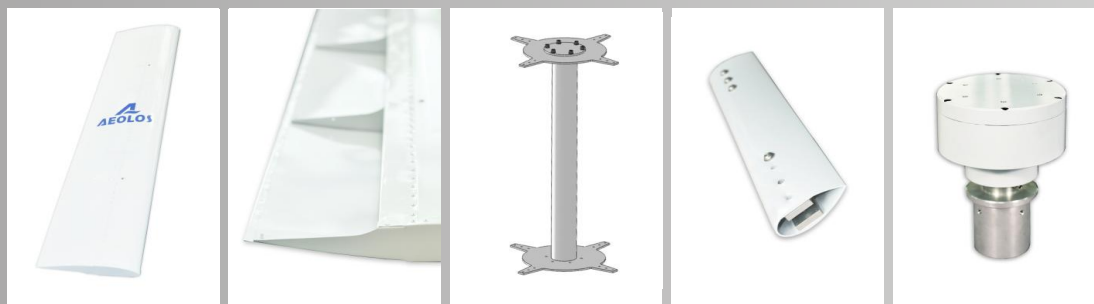
Blades RPM Limitation: 150 RPM
 PWM Dump Load: 12 kW Box
 Mechanical Brake: Manual/Auto

Optional

Remote Monitoring System (Internet/Wireless)
 Auto Hydraulic Brake System (Unattended Site)
 Off Grid : 48 V or 120 V
 Grid Tie : 360 V



| Wind Speed(m/s) | Annual Energy Output (kWh) | Wind Speed(m/s) | Annual Energy Output (kWh) |
|-----------------|----------------------------|-----------------|----------------------------|
| 3 m/s | 1051 kWh | 9 m/s | 43800 kWh |
| 4 m/s | 3504 kWh | 10 m/s | 60440 kWh |
| 5 m/s | 7120 kWh | 11 m/s | 71832 kWh |
| 6 m/s | 10512 kWh | 12 m/s | 87600 kWh |
| 7 m/s | 16644 kWh | 13 m/s | 98988 kWh |
| 8 m/s | 32412 kWh | 14 m/s | 105996 kWh |



5 YEAR WARRANTY



Aeolos Wind Energy, Ltd (UK)
 27 Old Gloucester Street, London WC1N 3AX
 United Kingdom
 Tel: +44 208 242 1884
 E-mail:sales@windturbinestar.com





**Aeolos wind turbine
SINCE 1986**



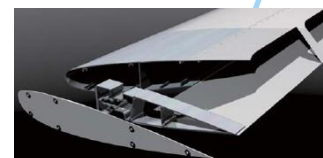
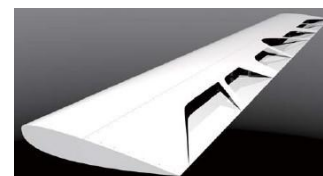
Why Choose Aeolos V 10kW Wind Turbine?

Triple Safety Protection

Special Blade Design: Aeolos blades use the special aerodynamic design which limits the max rotating speed to 150 rpm even the wind speed is 30m/s or 40m/s. It is more safe and reliable than traditional vertical axis wind turbine.

PWM Dump Load: Aeolos-V 10kW wind turbine has the 12 kW dump load box with PWM loading function. This will consume the over power output and control the voltage in strong wind speed.

Mechanical Brake: The manual mechanical brake can stop the wind turbine for maintenance or typhoon coming. We have the auto hydraulic brake system for remote installation site without people checking.

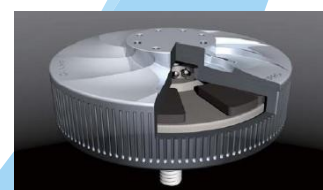


High Efficiency

Low Cut-in Wind Speed: Aeolos-V 10kW could start up with 2.5m/s wind speed and has the power output in 3.5m/s to inverter. This is more efficient than the vertical wind turbines with a 3.5m/s or even 4.5m/s cut in wind speed.

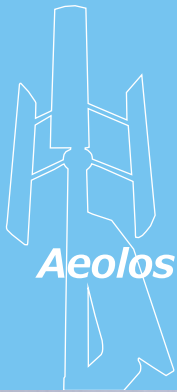
More Annual Output: According to the AWEA standard, Aeolos-V 10kW annual output is 7120 kWh at 5m/s wind speed. The annual output at 10m/s is 60440 kWh.

MPPT Charger For Off Grid: Aeolos-V 10kW use 48V MPPT charging controller to increase the charging efficiency to 94%. It can charge the battery bank when wind speed is above 3.5 m/s.



5 YEAR WARRANTY



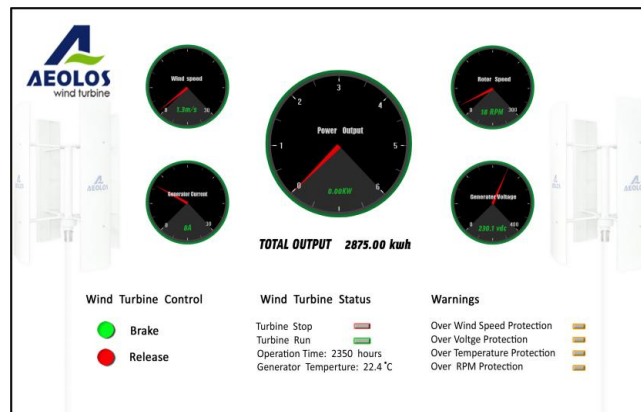


Aeolos wind turbine
SINCE 1986



Intelligence Control

Remote Monitoring System: Customer can remote monitor the wind turbine operation, wind speed and power output in office, home, airport and anywhere through the internet.



Auto Hydraulic Brake System: It is suitable for the remote installation sites, like the island, telecommunication tower station which does not have people checking and monitoring. This system can auto stop the wind turbine in over voltage, over wind speed, generator over temperature and all any other faults. It can auto release the wind turbine to run after the abnormal warnings.



5 YEAR WARRANTY



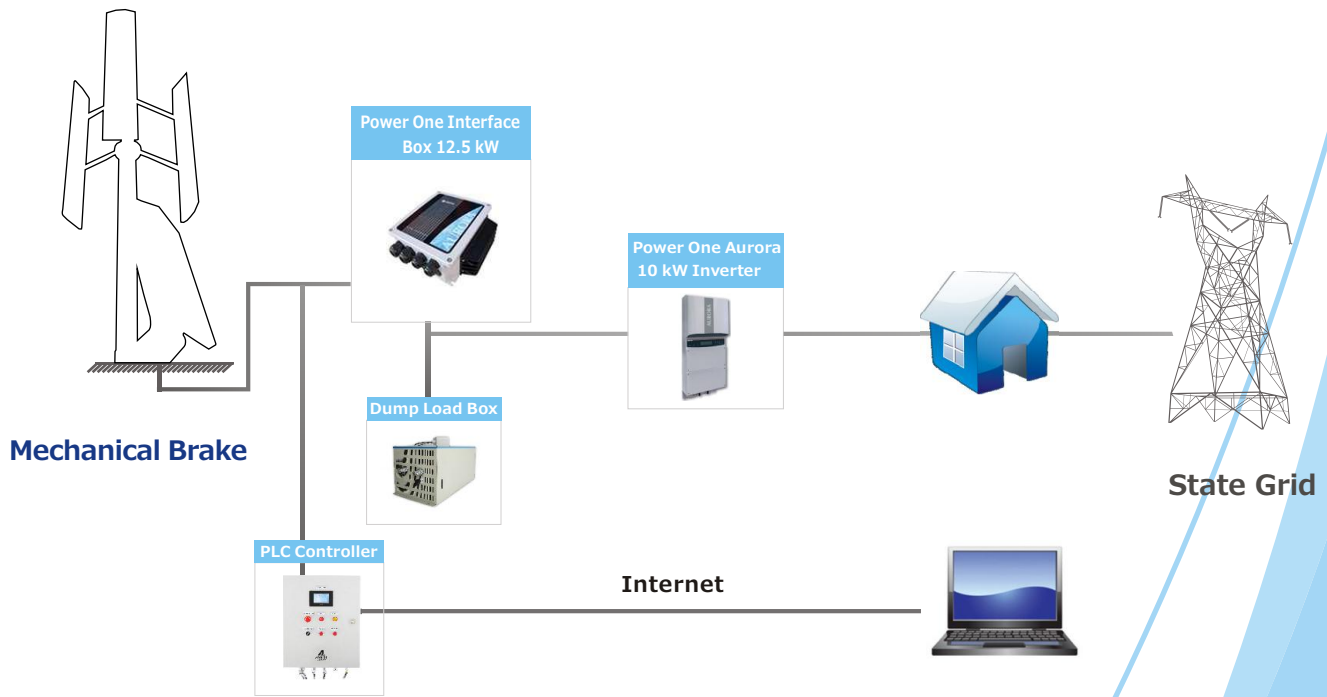


Aeolos wind turbine
SINCE 1986

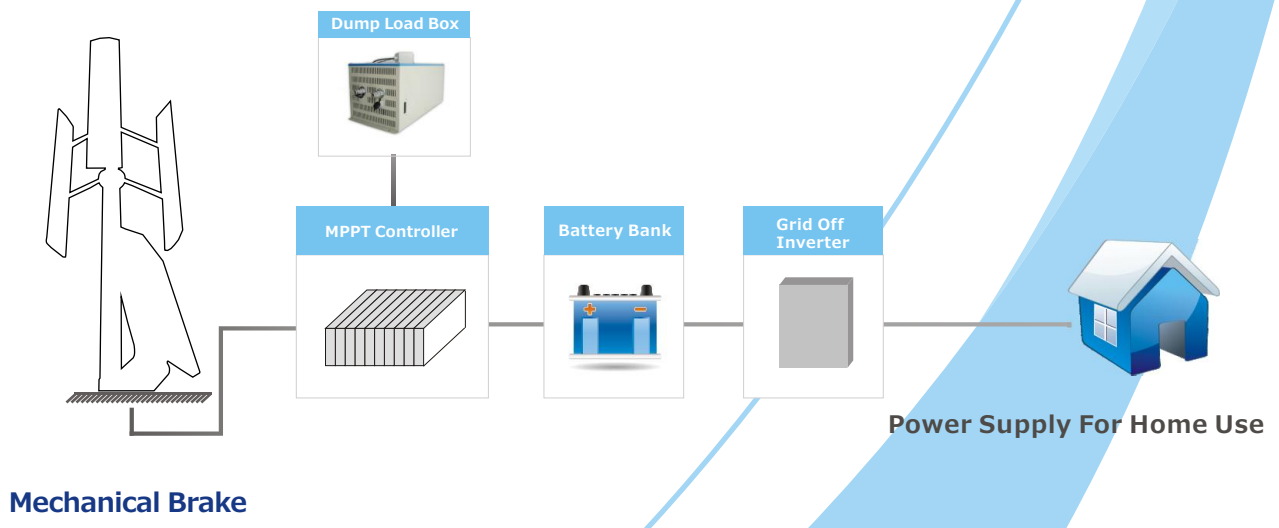


Wiring Diagram

Grid-on



Grid-off



5 YEAR WARRANTY

